



UNiQ
DIGITAL

ProCAM-Ai20SIP

IP STREAMING | ARTIFICIAL INTELLIGENT | SMART TRACKING




20x
OPTICAL
16x
DIGITAL
320xTOTAL

SONY
CMOS & VISCA



Recording



Conferencing



Streaming



Seamless
Connectivity



Flexible



High quality
audio integration



Crystal clear
video

UK | USA | UAE | KSA | QATAR | AFRICA | SINGAPORE | INDIA

ProCAM-Ai20SIP

Redefining Professional Video Experiences

- Built for corporates, educators, creators, and SMEs, the UNIQ ProCAM-Ai20SIP delivers 4K Ultra HD clarity with 20× optical zoom, ideal for conferencing, streaming, broadcasting, and teaching.
- Powered by a **SONY CMOS SENSOR & VISCA Protocols** sensor, precision optics, intelligent automation, and crystal-clear audio, it ensures every session is professional, engaging, and high-impact.



UNIQ & SONY

Precision CMOS Imaging

The advanced **SONY CMOS SENSOR & VISCA PROTOCOLS** sensor delivers crisp, vibrant, low-noise visuals, enabling seamless conferencing, streaming, and recording across corporate, education, and government sectors.



20X Optical & 16X Digital Zoom

True-to-Life Clarity

Capture fine details with UNIQ's 20× precision optical zoom, ensuring lifelike, professional-quality visuals for every meeting, lecture, or broadcast.



PAN for 360° view



TILT for 130° view



4K Resolution



20X Optical Lens



4 Digital array mic
Distance - 10mts
crystal pickup



Advanced User
Adjustable Settings

Dual Streaming
(Mainstream
& Sub Stream)

More Network
Streaming
RTMP, RTSP,
SRT & MORE...

Smart Function
Hand Remote

Various Application
Conferencing
Streaming
Recording



3 Way Power
USB, Power Adaptor, PoE



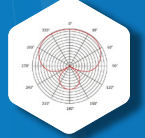
3 Way Control
Remote, Network, RS232



3 Way Streaming
HDMI, USB, Network



3 Processor Functions
Audio, Video, Advanced AI



Horizontal voice
pickup 180°



Table / ceiling
mount option

AI-Powered Automation – Effortless Precision

The UNiQ ProCAM-Ai20SIP uses advanced AI to automate complex camera tasks—framing, tracking, and adjustment reducing manual effort while delivering flawless, professional-grade video.

Voice Tracking

The UNiQ AI Engine automatically detects the active speaker and pans the camera toward them. Perfect for panel discussions, multi-speaker conferences, and dynamic meetings, it provides hands-free, precise, professional-grade coverage

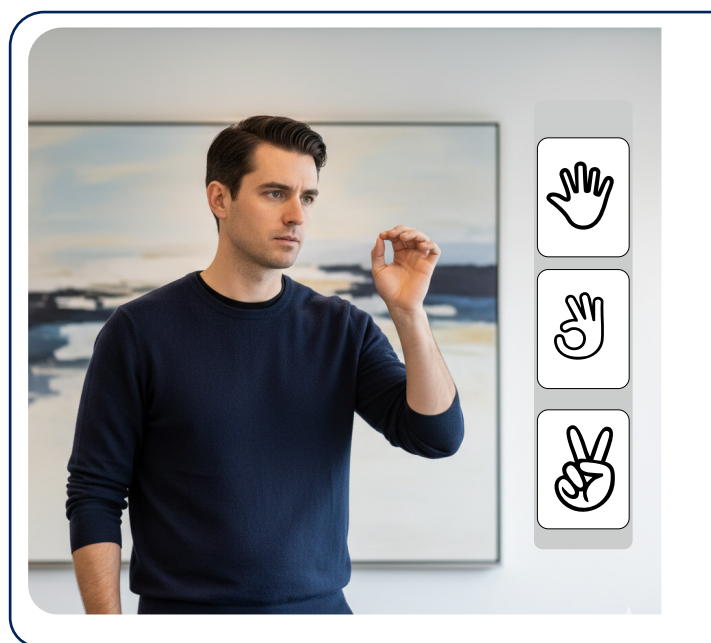


Gesture Control Intuitive Camera Operation

FASTER, SMARTER, AND PROFESSIONAL

The UNiQ ProCAM-Ai20SIP leverages UNiQ AI to recognize 3 hand gestures, allowing you to control the camera effortlessly without touching any device

- REDUCES MANUAL EFFORT
- SAVES TIME
- STREAMLINES OPERATIONS



Smart Auto Framing

The UNiQ AI Engine automatically centers the subject on the screen using intelligent pan, tilt, and adjustments, ensuring precise proportional grid framing with life-like clarity, while saving time and reducing manual effort.



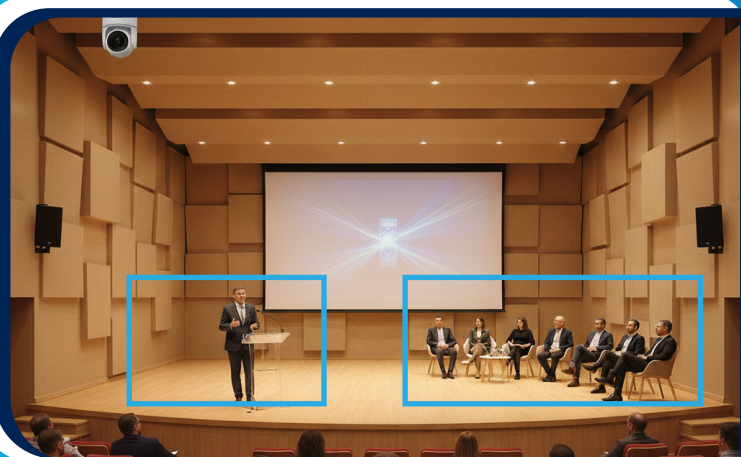
Single-Person Tracking

The UNI_Q AI Engine locks onto a single person and follows them smoothly and accurately, keeping the focus on the presenter, lecturer, or trainer at all times. This reduces manpower needs while delivering professional-quality video



Zone Tracking

Define up to four key zones, and the UNI_Q AI Engine monitors these areas automatically. The camera captures movement only within the zones, providing targeted, high-precision coverage for whiteboards, podiums, or demonstration areas.



Hybrid Tracking

Combining Zone and Single-Person Tracking, the UNI_Q AI Engine maintains a steady view inside a safe zone and intelligently follows the subject outside, ensuring smooth, uninterrupted capture for presenters who move across the stage



Network Control & Streaming



**Multi-Platform
Compatibility**

OBS Studio | Stream labs Desktop | v Mix (Basic/HD) | Wire cast Studio | X Split Broadcaster | Stre -Yard Restream Studio | YouTube | Google Meet | Zoom | Microsoft Teams | Wowza Streaming Engine | ATEM Mini Extreme ISO

Ergonomic Smart Remote— Effortless Control

The UNIQ ProCAM-Ai20SIP comes with an advanced smart IR hand remote that simplifies camera control automates key functions, boosting productivity. Its intuitive design enables quick operation, reduces manual effort, and saves valuable time across all applications.



Product Specifications

Parameter	Specifications	
Product details	Product	320X, 20X Optical, IP Collaboration Camera AI Smart --> Zone Tracking, Hybrid Tracking, Voice tracking, Gesture tracking, Person tracking & Auto framing
	Product Model	ProCAM-Ai20SIP
	Total Zoom	320x
	Optical Zoom	20x
	Digital Zoom	16x
Camera, Lens	Image Sensor	1/2.8inch CMOS sony sensor
	Effective Pixel	8.5 MP
	Min Lux	0.1Lux
	Focal Length	20X: f=5.2mm(W)-104mm(T)
	Horizontal View Angle	20X: 58.7°(W)-3.2°(T)
	Shutter Speed	1/25 1/10000s
	Signal	PAL/NTSC
	Resolution	HDMI:4KP30/25,1080P60/59.94/50,1080P30/ 29.97/25,720P60/59.94/50 USB:MJPEG:3840*2160,2560*1440,1920*1080,1280*720, 960*540640*360,480*270*384*216,320*180,256*144/30 YUY2:1920*1080/5,1280*720/10
	Focus Mode	Auto/Manual
	Exposure control	Auto/Manual
	Gain	Auto/Manual
White Balance	Auto/Indoor/Outdoor/Manual	
Image Effect	Full color/black and white/image flip	
Microphones	No. Of. Digital Microphones	4
	Microphones Array Form	linear
	Clearance Between the Microphones	45.8mm
	Sampling Rate	16KHz/48KHz
	Voice Pickup distance	0-10meters
	Horizontal Voice Pick up Angle	Horizontal 180°
	Sensitivity	-26dBfs
	SNR	65.5dB
Streaming & Control	Video Interface	HDMI/USB3.0/IP, NDI/HX2(optional)
	Video Compressed Format	MJPEG/H.264
	Control Interface	RS-232, RS-422/485
	Control Agreement	SONY VISCA, PELCO P/D, VISCA over IP, ONVIF, RTMP, RTSP, SRT
	Communicate Baud Rate	2400/4800/9600/11520/19200/38400
	Power Interface	DC-038 power socket (DC12V)
PTZ Parameters	Pan	340°(max.speed: 60°/s)
	Tilt	-30°~ +90°(max. speed: 60°/s)
Others	Decoder	Built in
	Power Adapter	12V,2A DC power adapter for AC100V~ AC240V, 50Hz
	Operational Power	12VDC,2Amp
	Power Consumption	24W(MAX)
	Storage Temperature and Humidity	-10°C ~ +70°C @ 10%-90%
	Working temperature and Humidity	-0°C ~ +60°C @ 10%-90%
	Operating Environment	Indoor
	Size	180*180*175mm
Weight	1999g	

Applications



Auditorium



NOC / SOC / CCC



Conference-Room



Town Hall



Training Hall

Prestigious Lineup of Cutting-Edge Professional AV Products

Ai Interactive Displays

AiO | Pro | Education Series

65" | 75" | 86" | 98" | 100"



Active LED Video Wall

Indoor & Outdoor LED Walls

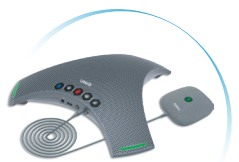
CoB, GOB, and Custom Pixel Pitch Options



Video Conferencing Products & Professional Cameras

From AI Video Bars to PTZ Cameras

**AiO Video Bars | AiO PTZ Video Bars
PTZ Cameras | Speakers Phone Conferencing | Microphones | DSP**



AV Interface Products

**Extenders – CAT6 Wireless | Point-Point
KVM Extenders | Over-IP
Matrix & Splitter Cum Extenders
Splitters Switchers | Matrix**



Disclaimer

- Specifications, features, visuals, and models are subject to change without notice.
- Product availability and features may vary by region.
- Colours/images shown are for reference only; actual product may differ.
- Warranty terms vary by model and region—refer to official documentation.
- We recommend staying updated via our official channels for the latest info.
- Performance may improve with software/firmware updates.
- All trademarks belong to their respective owners.
- We are not liable for typographical or illustrative errors.
- Please dispose of products responsibly as per local e-waste norms.
- Data (if applicable) is handled per our privacy and regulatory compliance.
- No liability is assumed for indirect or consequential damages